

FD-8060

FLOOR DOOR Non Hinged, Flush Diamond Plate

Application

- Designed for interior and exterior applications that require an access opening that will blend in with the surrounding floor material

Product Features

- Flush Diamond Plate door panel
- Door panel removable via screws

FD-8060 Floor Door Specifications:

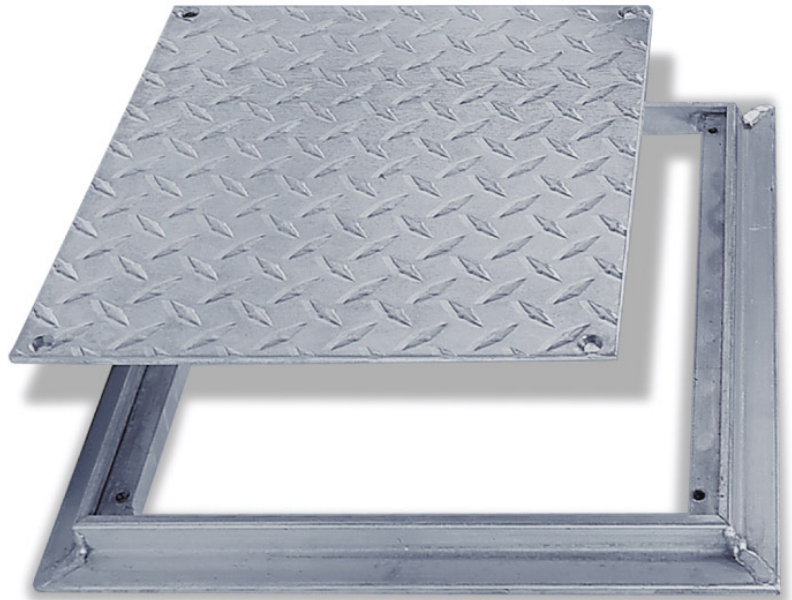
Material: Aluminum

Door: 1/4" aluminum diamond plate reinforced for the live load of 150 lb/per sq. ft.

Frame: 1" x 1" aluminum angle designed to be cast into concrete

Standard Latch: Door panel is secured to frame with 1/4" x 1" flat head screws

Finish: Mill finish



FD-8060 STANDARD SIZES

(other sizes available upon request)

Nominal Door Size W&H		Weight per Door	
Inches	mm	lbs.	kg.
8 X 8	203 X 203	5	2
12 X 12	305 X 305	7	3
18 X 18	457 X 457	13	6
24 X 24	610 X 610	20	9

For detailed specifications see submittal sheet

