

# FT-8080-1

## FLOOR DOOR, Non Hinged

### Panel Recessed 1" for Ceramic Tile/Concrete

#### Application

- Designed for interior and exterior applications that require an access opening that will blend in with the surrounding floor material

#### Product Features

- Recessed 1" to accommodate ceramic tile/concrete
- To keep the floor material from cracking or chipping within the door panel, the securing screws are located in the flange of the mounting frame

#### FD-8080-1 Floor Door Specifications:

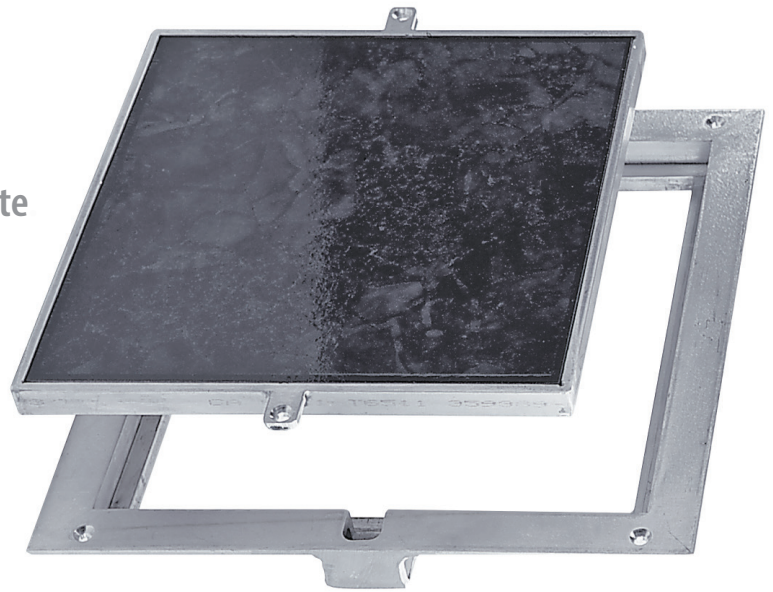
**Material:** Aluminum

**Door:** 1/4" smooth aluminum plate reinforced for live load of 150 pounds/sq. ft., recessed 1" for ceramic tile/concrete

**Frame:** 1-1/2" x 1-1/4" aluminum angle with mounting holes in top flange

**Standard Latch:** Door panel is secured to frame with 1/4" x 1" flat head screws

**Finish:** Mill finish



#### FT-8080-1 STANDARD SIZES

(other sizes available upon request)

Nominal Door Size W&H		Weight per Door	
Inches	mm	lbs.	kg.
8 X 8	203 X 203	6	3
12 X 12	305 X 305	11	5
18 X 18	457 X 457	17	8
24 X 24	610 X 610	19	9

For detailed specifications see submittal sheet

